

Pathloss File Conversion Methods



Pathloss File Conversion Methods

Opening RAF files

The radio file is in a .raf format (which is a text file). It can be viewed in any word editor (e.g. Microsoft Word, Notepad, WordPad, etc...)

- 1) Open the word editor, choose File – Open and point to where the .raf file is stored.
- 2) Right click on the raf file and choose “Open With” and open it using any of the word editors.

Location of AntRad

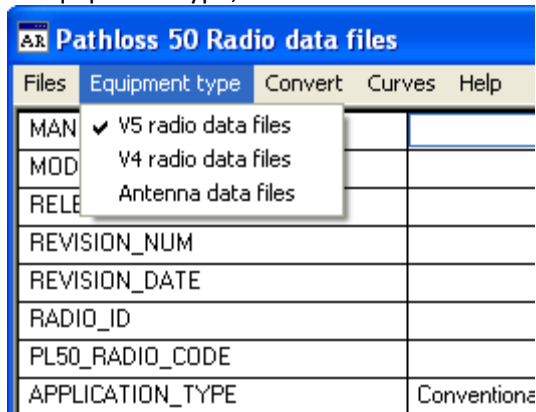
To convert the .raf files to a Pathloss 5 format, you need to use the AntRad program which gets installed with Pathloss 5.

It can be found as a shortcut on the desktop or can be opened from the start menu.

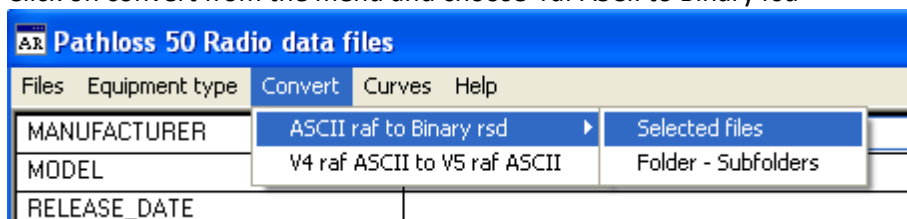
Location of AntRad: C:\Program Files\Pathloss 5

Converting RAF to a Pathloss 5 format (rsd)

- 1) Open AntRad
- 2) In Equipment Type, choose “V5 radio files”

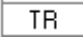




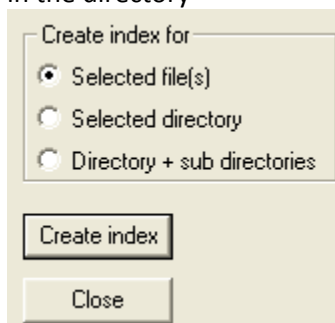
- 3) Click on convert from the menu and choose raf ASCII to Binary rsd

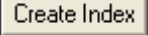


After selecting “Selected files”, point to the location where the files you want to convert are stored. You can choose single or multiple files to convert. The converted files (in rsd format) will be stored in the same location as the original files

Loading the pathloss files once converted, into Pathloss 5

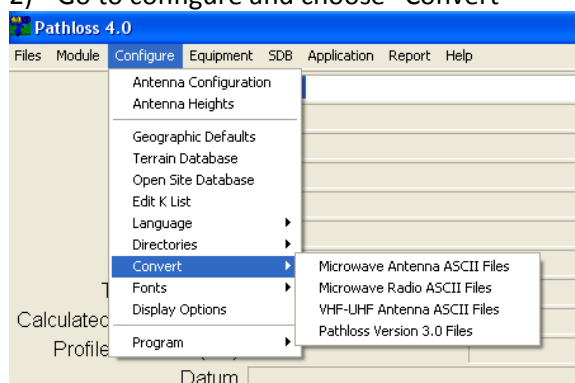
- 1) Once you have created and started designing a link in Pathloss 5, go to the Transmission Analysis window.
- 2) Click on  to apply the radio. A window will come up, click  to go to the radio index table
- 3) Click on  to point to the directory where the converted radio files are stored
- 4) After selecting the directory, you can choose to add selected file(s) to the index or all the files in the directory



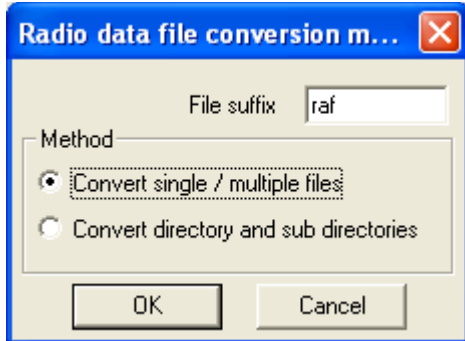
- 5) Click on  to index the file(s). You only need to do this once, the radio files will remain in the index table.

Converting RAF to a Pathloss 4 format (mrs)

- 1) Open Pathloss 4
- 2) Go to configure and choose "Convert"





- 3) Choose “Microwave radio ASCII files”
- 4) You can choose single or multiple files to convert and click OK



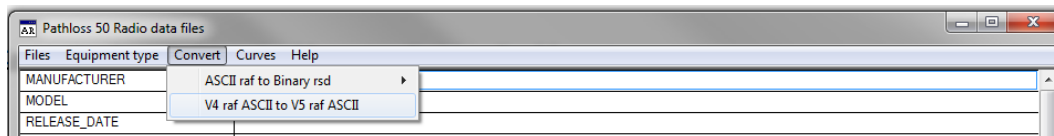
- 5) Point to the location where the files you want to convert, are stored. The converted files (in mrs format) will be stored in the same location as the original files

Loading the pathloss files once converted, into Pathloss 4

- 1) Once you have created and started designing a link in Pathloss 4, go to the Worksheet window
- 2) Click on  to apply the radio. Click Code Index
- 3) Select  and point to the directory where the converted radio files are stored
- 4) Click OK to index the files. You will need to do this step each time you start a new design

Converting from Pathloss 4 raf format to Pathloss 5 raf format

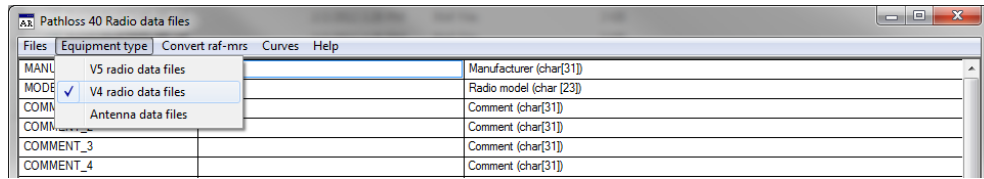
- 1) Open Antrad, select the convert tab, then select V4 raf ASCII to V5 raf ASCII (shown below).



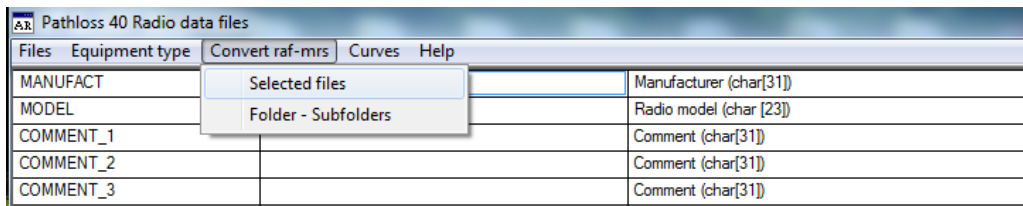
- 2) Select the files you wish to convert (can select multiple) then click save, the files will be saved as Pathloss 5 raf files.

Converting from Pathloss 5 raf format to Pathloss 4 raf format

- 1) Open Antrad and select the Equipment type tab, then select V4 Radio data files (shown below).



- 2) Click "Convert raf-mrs", then click "selected files" and then select the pl5 raf files you wish to convert.



- 3) Select a location for the new .mrs files.