

# HIGH PERFORMANCE ANTENNAS

## ELECTRICAL SPECIFICATIONS

### ANTENNA CODE: A-ANT-XXG-72-C\*

XX: FREQUENCY, (L6GHZ: L6, U6GHZ:U6, 7GHZ: E7, 8GHZ: 08, 7/8GHZ: E7)

\*IF SPECIFIC ANTENNA REQUESTED THEN ADD "- A" = ANDREWS, "-R" = RADIOWAVES; "-PT"=PUTIAN OR LEAVE AS IS

Frequency Band, GHz	Mid Band Gain, dBi	Beamwidth, degrees	Front/Back, dB	ETSI 302 217 Class	FCC Part 101	Waveguide (non direct mount)	Waveguide Interface (non direct mount)
6Ghz 5.925–7.125	39	1.8	65	3		WR137	CPR137(G)
7Ghz-8Ghz 7.125 – 8.5	40.8	1.5	67	3		WR112	CPR112(G)
10Ghz 10 – 10.7	43.1	1.2	69	3	Cat A	WR90	UBR100
11Ghz 10.7-11.7	43.8	1.1	70	3	Cat A	WR90	UBR100
13Ghz 12.7-13.25	45.2	0.9	72	3	Cat A	WR75	UBR120
15Ghz 14.25-15.35	46.2	0.8	74	3		WR62	UBR140
18Ghz 17.7-19.7	47.8	0.7	76	3	Cat A	WR42	UBR220
23Ghz 21.2-23.6	49.4	0.5	79	3	Cat A	WR42	UBR220

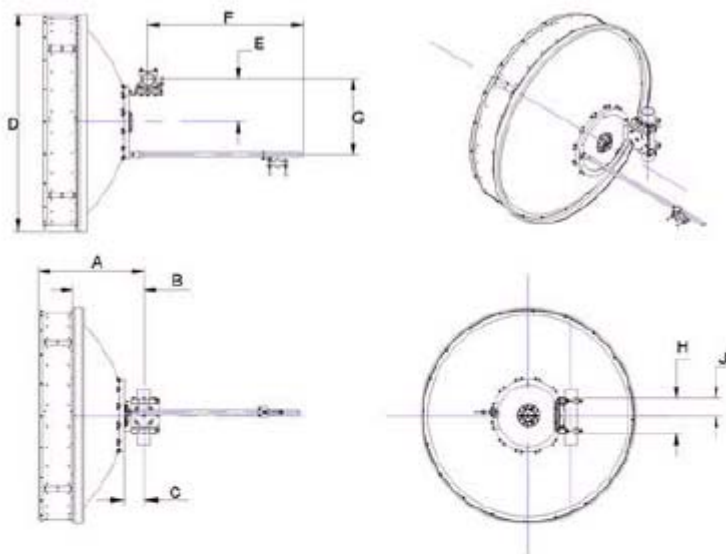
XPD = 30dB across all frequencies

Return Loss = 17.7dB across all frequencies

*Actual antenna appearances may differ from shown.*

*Details shown below are for Andrew Antennas.*

## OUTLINE EXAMPLE DIMENSIONS



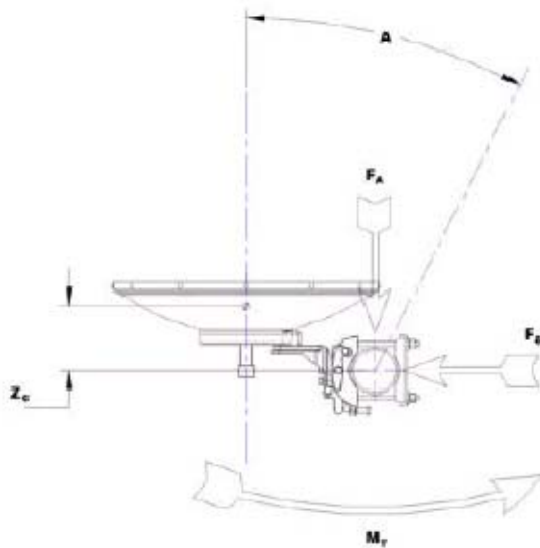
ANTENNA DIMENSIONS			
All dimensions in mm (inches)			
A	949 (37.4)	F	1355 (54.9)
B	636 (25.0)	G	677 (26.7)
C	176 (6.9)	H	160 (6.3)
D	1939 (76.3)	J	320 (12.6)
E	382 (15.0)		

### Antenna Fine Adjustment

Fine Azimuth	$\pm 12^\circ$
Fine Elevation	$\pm 15^\circ$

## WIND FORCES

The axial, side and twisting moment forces provided are maximum loads applied to the tower by the antenna at a wind survival speed of 200 km/h (124 mph). In every instance they are the result from the most critical direction for each parameter. The individual maximums may not occur simultaneously. All forces are referenced to the antenna mounting pipe.



<b>Axial Force</b>	$F_a$ max	7128 N
<b>Side Force</b>	$F_s$ max	3531N
<b>Moment</b>	$M_T$ max	3197 N

### Antenna Gross Weight (Crated) - Andrew

Gross Weight, kg (lbs) 181 (400)

### Antenna Crated Dimensions (Single) - Andrew

Dimensions, in (cm) 82 x 27 x 84 (208 x 69 x 213)

### Antenna Gross Weight (Crated) - Radiowaves

Gross Weight, kg (lbs) 181 (400)

### Antenna Crated Dimensions (Single) - Radiowaves

Dimensions, in (cm) 77 x 35 x 80 (196 x 89 x 203)

**Connect with us today!**

600-411 Legget Drive  
Ottawa, Ontario, Canada, K2K 3C9  
Tel: 613-599-9991  
Fax: 613-599-4225

[nasales@dragonwaveinc.com](mailto:nasales@dragonwaveinc.com)  
[emeasales@dragonwaveinc.com](mailto:emeasales@dragonwaveinc.com)